

South Bucks

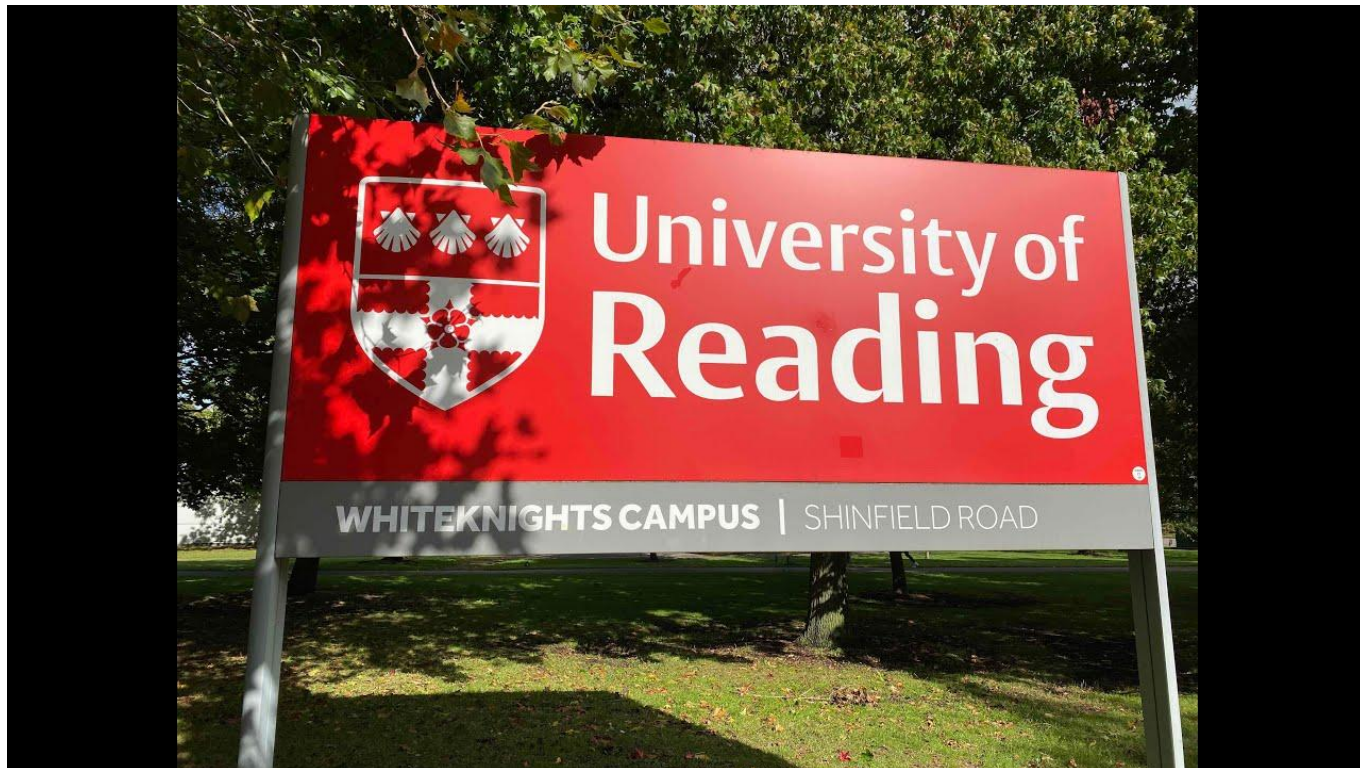


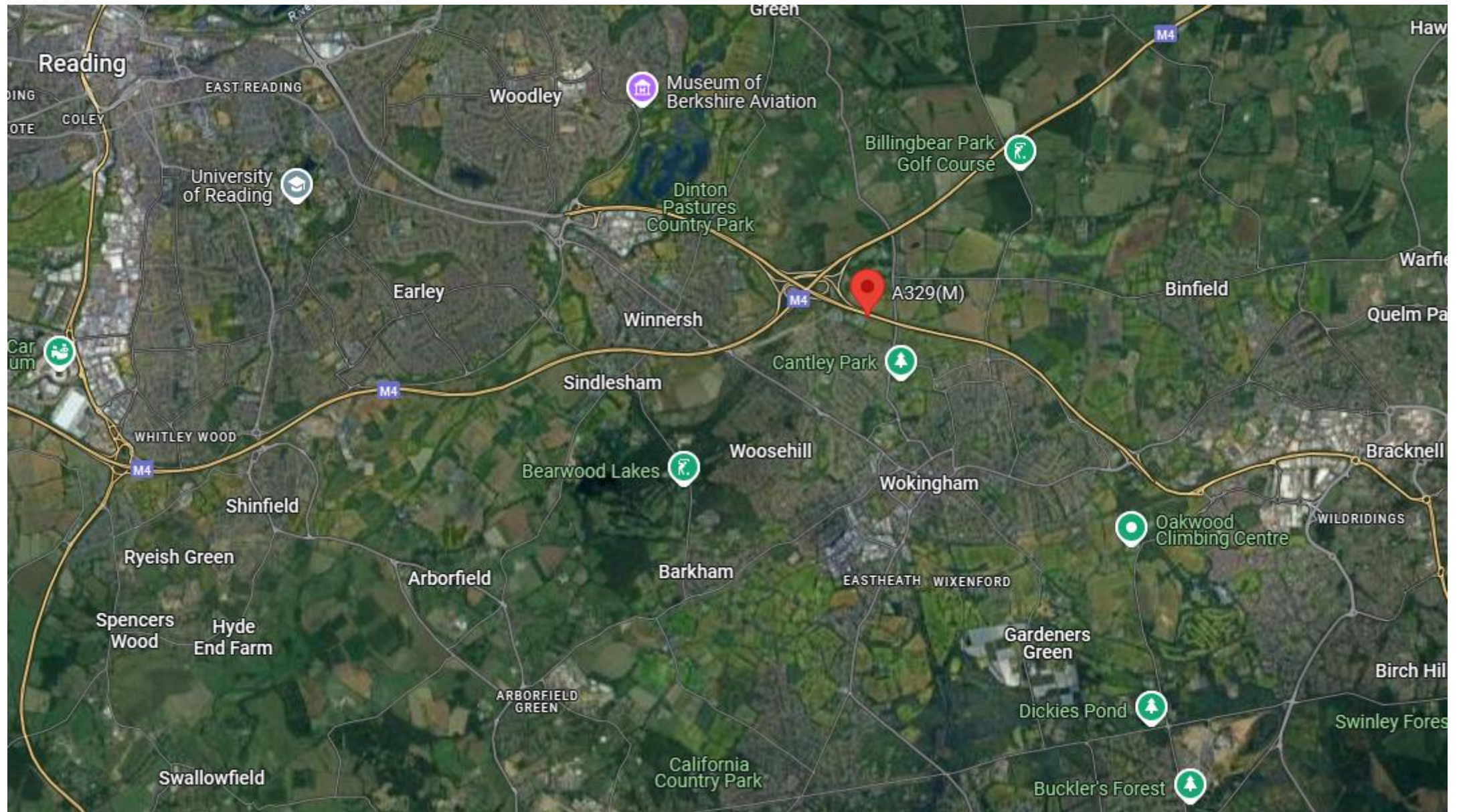
Peter Hall Geographer

Paul Le Blond

SBU3A Science Group 2 January 2025





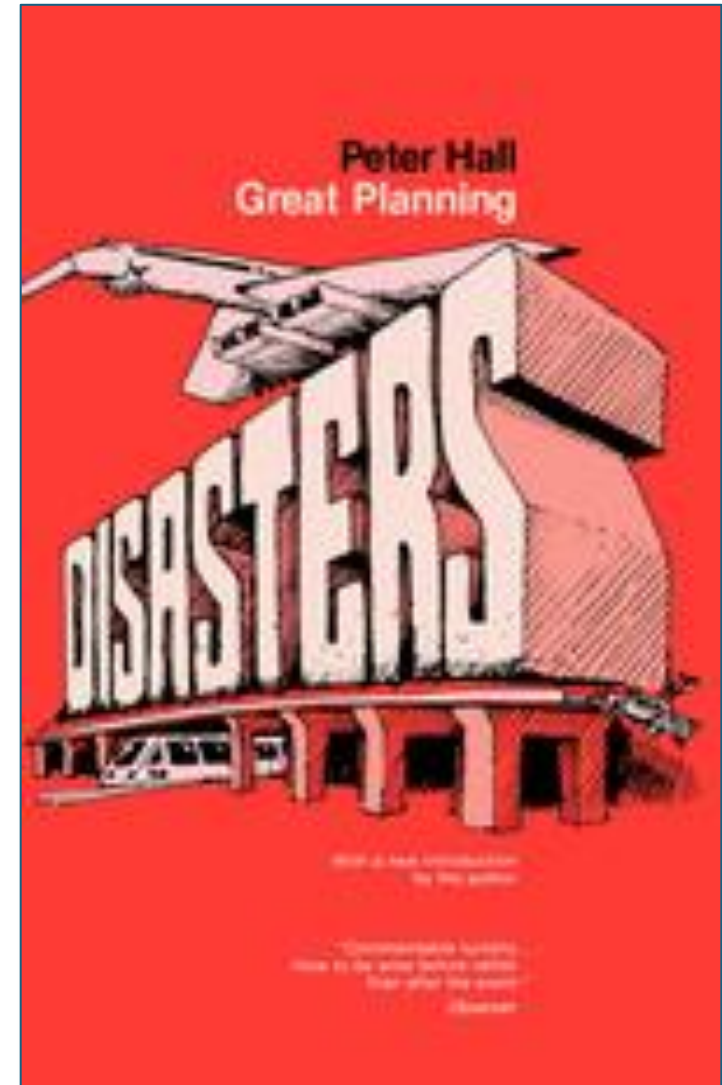


Peter Hall

- Born 1932
- St Catherine's Cambridge PhD
- 1957 Birkbeck College
- 1968 Reading University
- University of California Berkeley
- 1989 UCL Bartlett School of Planning
- 1998 Knighted
- President of the Town and Country Planning Association
- Died 2014

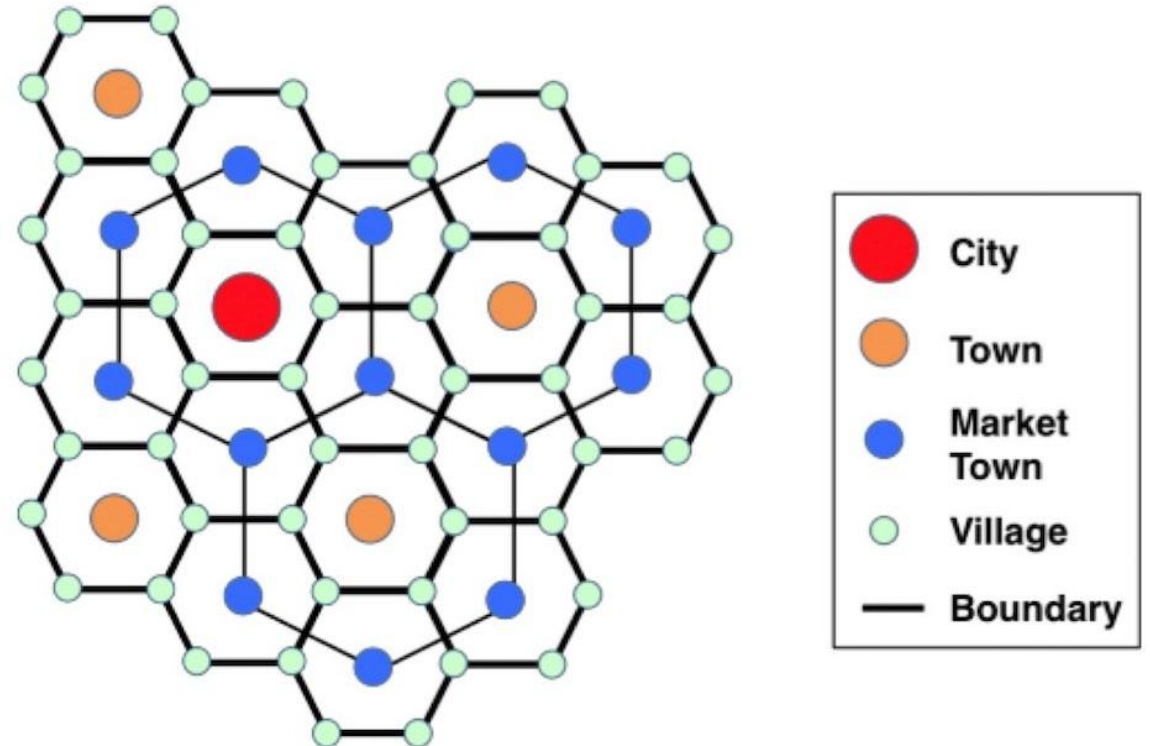
Peter Hall - achievements

- Made human geography a science
- Better understanding of cities
- The 'Enterprise Zone' concept

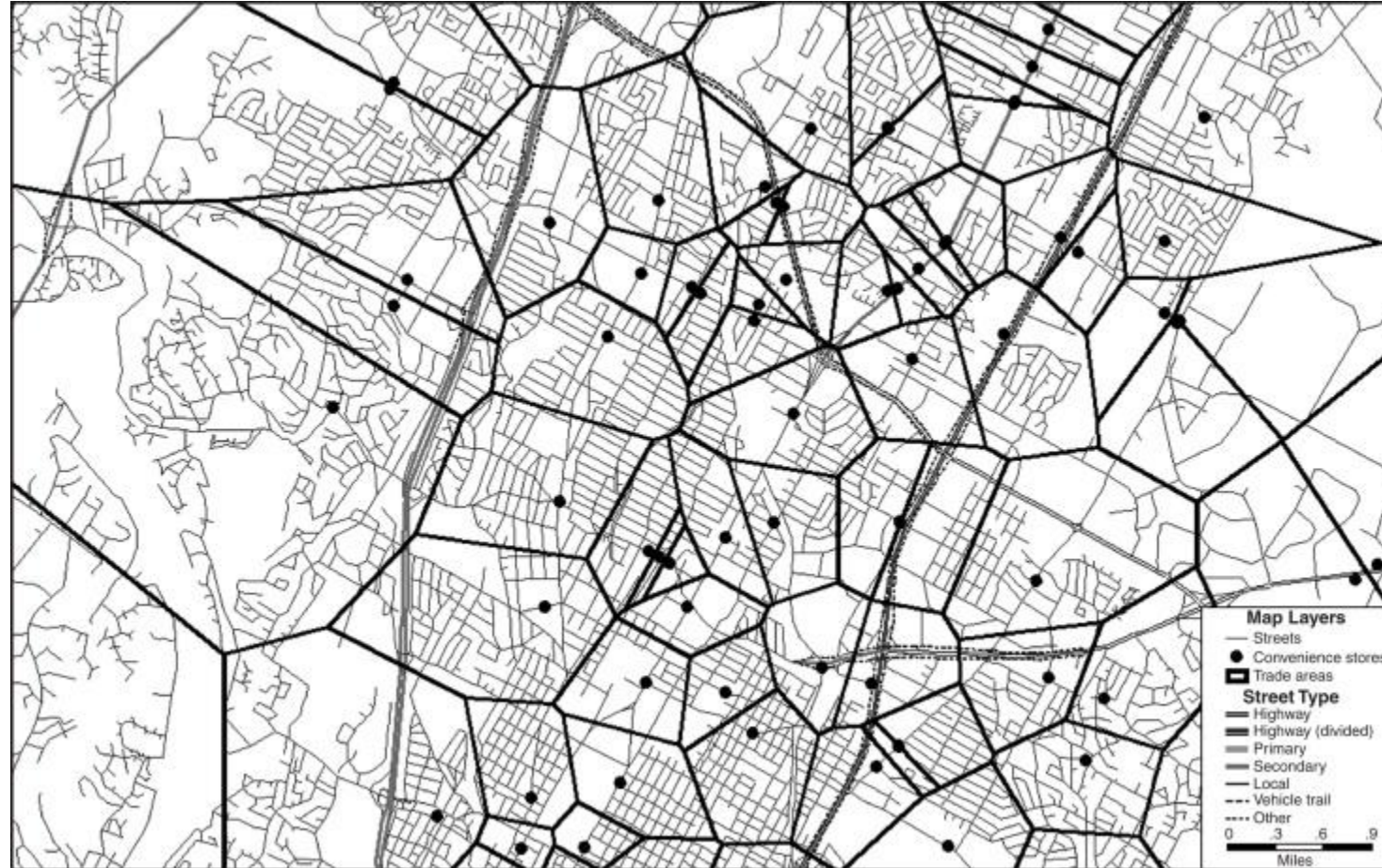


Human Geography as a Science

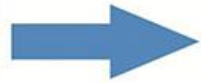
- Previously all about maps and descriptions
- Taught 'locational analysis'
- Developed from theories of Walter Christaller in the 1930s – Central Place theory
- Locational Analysis in Human Geography (1965) Peter Haggett
- Now using advanced GIS tools
- Geographers with slide rules!
- Planning changed more in 1960s than previous 100 years



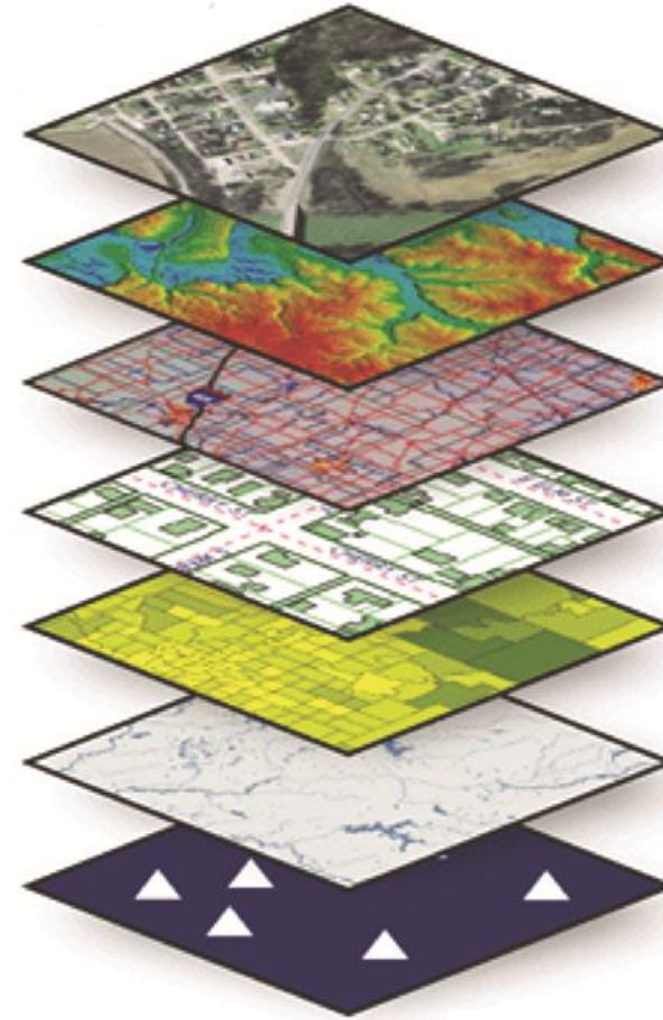
Central Place Theory applied to Austin, Texas



Actual Observed World



GIS Model & Method



Data Slices

Satellite Imagery

Topographical Data

Transportation
Infrastructure

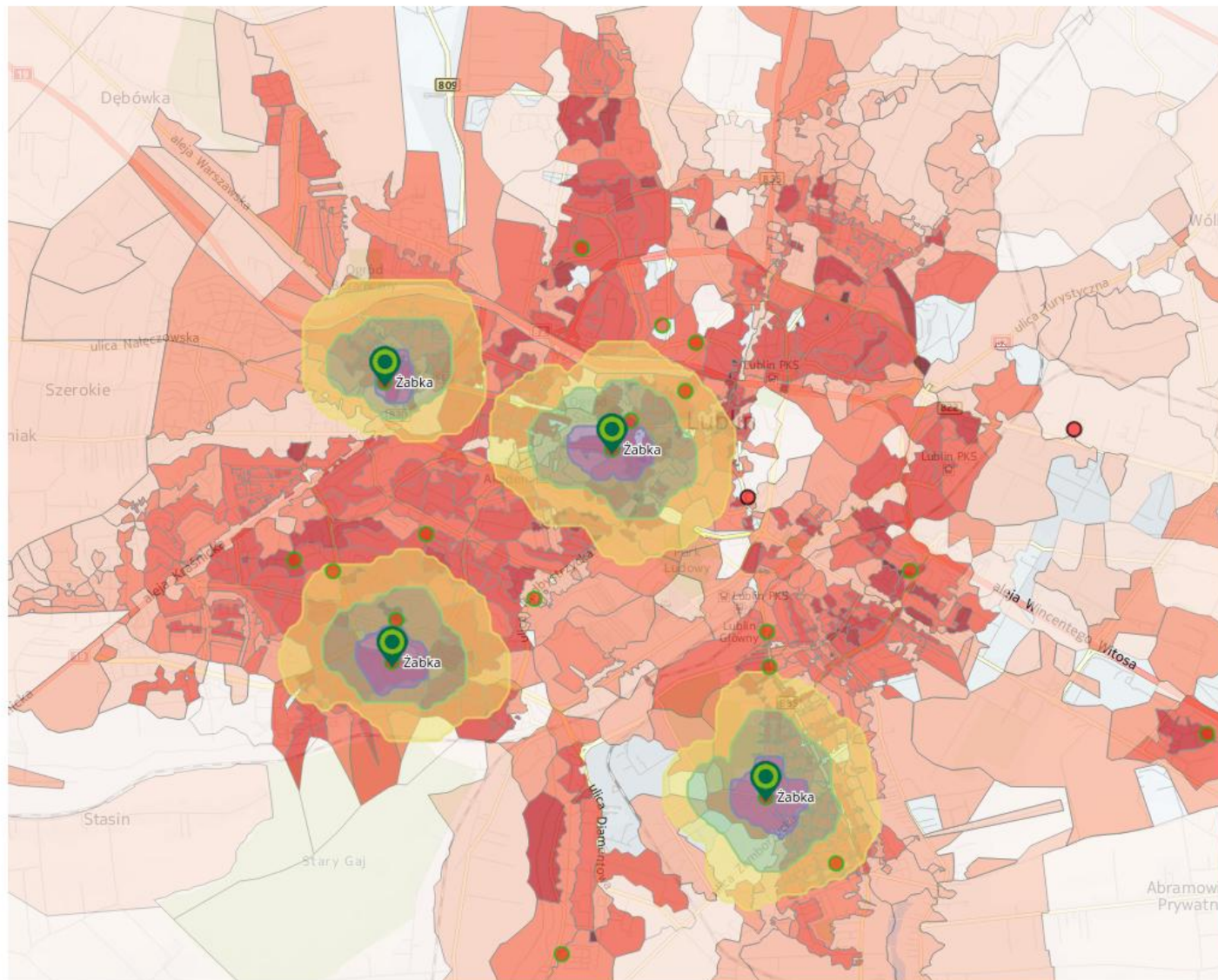
Population Density

Economical Data

Disease Prevalence

Healthcare Site
Locations

Mapa



Projekty

+ Nowy Zapisz Usuń

Żabki Lublin

Catchmenty

15 min

 10 min

 5 min

[Wyznacz obszary](#) [Oblicz statystyki](#)

Obiekty i statystyki

obiekty	15 min pieszo <input checked="" type="checkbox"/>	10 min pieszo <input checked="" type="checkbox"/>	5 min pieszo <input checked="" type="checkbox"/>
Żabka <input type="button" value="X"/> <input checked="" type="checkbox"/>	Liczba mieszkańców: 12967 Siła nabywcza w mln EUR: 87.55	Liczba mieszkańców: 7929 Siła nabywcza w mln EUR: 54.24	Liczba mieszkańców: 3080 Siła nabywcza w mln EUR: 21.06
Żabka <input type="button" value="X"/> <input checked="" type="checkbox"/>	Liczba mieszkańców: 6047 Siła nabywcza w mln EUR: 39.47	Liczba mieszkańców: 4633 Siła nabywcza w mln EUR: 30.40	Liczba mieszkańców: 2558 Siła nabywcza w mln EUR: 16.96
Żabka <input type="button" value="X"/> <input checked="" type="checkbox"/>	Liczba mieszkańców: 19441 Siła nabywcza w mln EUR: 118.50	Liczba mieszkańców: 10808 Siła nabywcza w mln EUR: 65.46	Liczba mieszkańców: 3082 Siła nabywcza w mln EUR: 18.25
Żabka <input type="button" value="X"/> <input checked="" type="checkbox"/>	Liczba mieszkańców: 7488 Siła nabywcza w mln EUR: 48.00	Liczba mieszkańców: 4285 Siła nabywcza w mln EUR: 26.20	Liczba mieszkańców: 1714 Siła nabywcza w mln EUR: 10.54

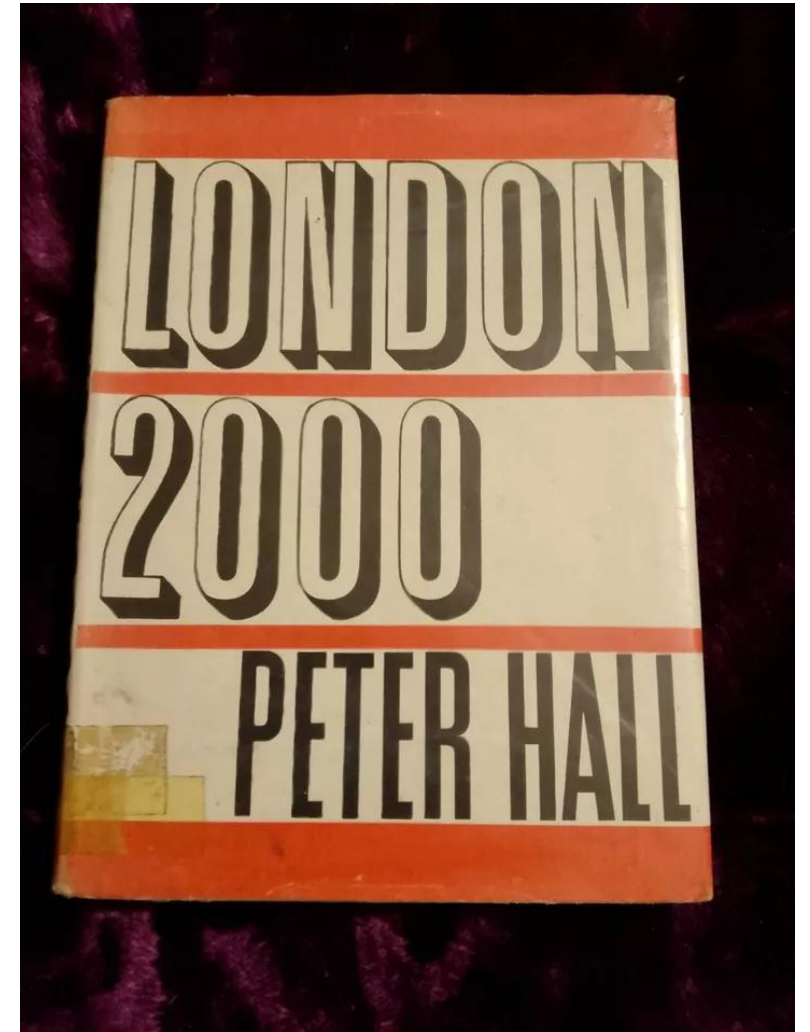
Zapisano wizualizację

Cities - Selected Bibliography

- London 2000 (1963)
- The World Cities (1966)
- Cities of Tomorrow (1988)
- London 2001 (1989)
- Urban Future 21: a Global Agenda for Twenty-First century Cities (2000)
- Good Cities, Better Lives (2013)

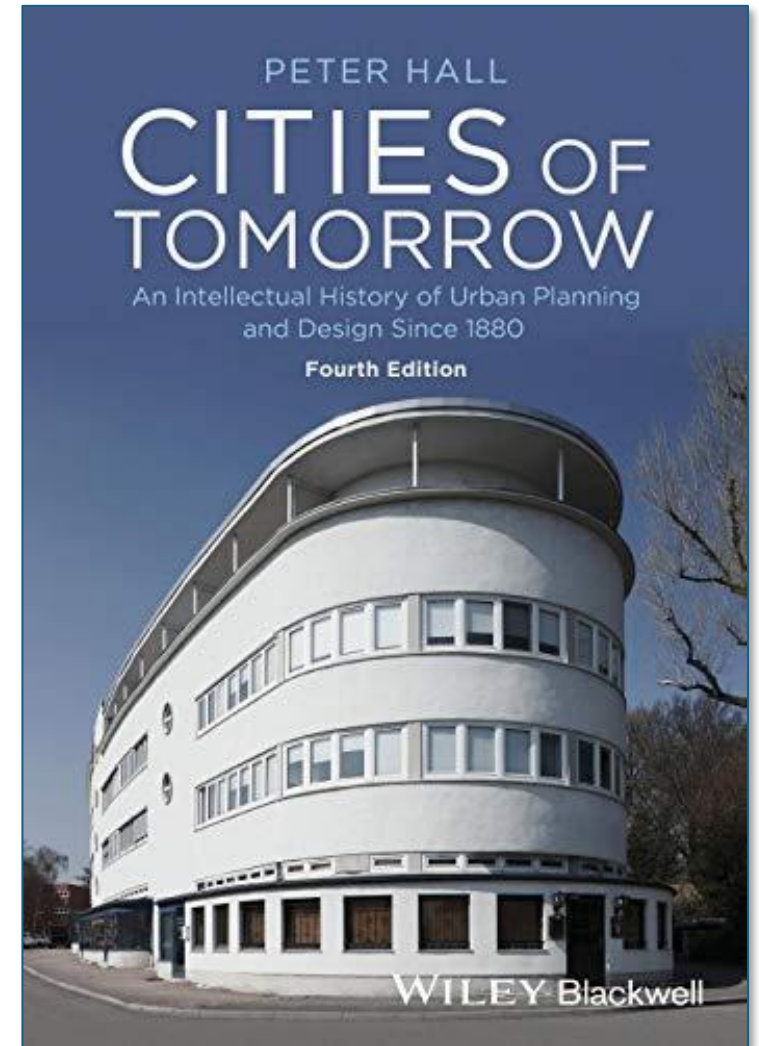
London 2000 (1963) and London 2001 (1989)

- ‘Pragmatic futurism’
- Optimism that planned growth could improve lives of Londoners
- Did not predict economic shocks or shift to post-industrial economy
- New town and motorway proposals scaled down
- London 2001 – what happened to the dream of the 1960s?
- Argues for strategic planning



Cities of Tomorrow (1988)

- An Intellectual History of Urban Planning and Design in the Twentieth Century
- The City...
 - Of Imagination
 - Of Dreadful Night
 - Of By-Pass Variegated
 - In the Garden
 - In the Region
 - Of Monuments
 - Of Towers
 - Of Sweat Equity
 - On the Highway
 - Of Theory
 - Of Enterprise
 - Of the Tarnished Belle Epoque
 - Of the Permanent Underclass



The City of Dreadful Night

- Reactions to the Nineteenth Century Slum City
- London
- Paris
- Berlin
- New York



The City of By-Pass Variegated

- The Mass Transit Suburb
- The LCC starts to build:
 - Tooting, Norbury, White Hart Lane, Old Oak
- London Tube and trams:
 - Yerkes, Pick and Stanley
- The building of suburbia:
 - Costain, Crouch, Laing, Taylor Woodrow, Wates and Wimpey
- New York and Chicago:
 - Forest Hill Gardens, Riverside



The City in the Garden

- The Garden City Solution
- Ebenezer Howard
- Raymond Unwin and Barry Parker
- Letchworth, Hampstead, Ealing Garden Suburb, Welwyn Garden City
- Germany, USA



The City of Towers

- The Corbusian Radiant City
- Paris
- Chandigarh
- Brasilia
- London
- St Louis



The City on the Highway

- The Automobile Suburb
- H G Wells: Anticipations (1901)
- Robert Moses: New York's master builder
- World's first motorways in Germany 1921
- Los Angeles shows the way:
 - Pacific Electric Railway
 - Multiple O&Ds instead of radial
- Control in Europe:
 - London, Stockholm, Paris

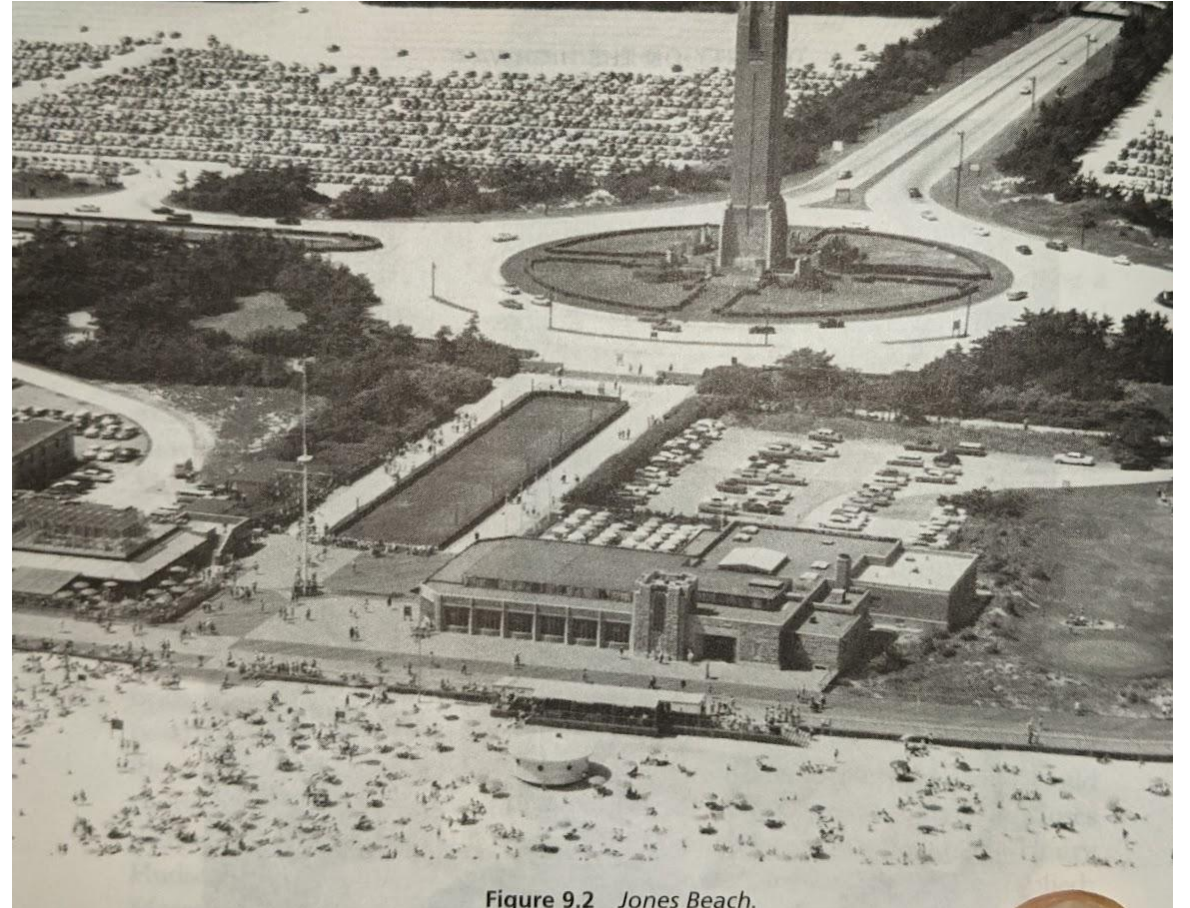


Figure 9.2 Jones Beach.

Enterprise Zones – London Docklands

- Docks closed from 1960s
- Immediately next to The City
- London Docklands Development Corporation
- Docklands Light Railway
- Jubilee Line Extension
- London City Airport
- Canary Wharf



Enterprise Zones – London-Cambridge

- Eastern Promise: Development Prospects for the M11 (1986)
- Lea Valley
- Harlow New Town
- Stansted Airport 1991
- Cambridge
- Thameslink and Anglia Trains
- East West Rail 2030?



Enterprise Zones – Thames Valley

- Western Sunrise: the Genesis and Growth of Britain's Major Tech Corridor (1987)
- M4-M3 (and A329(M))
- GWR and SWR
- Heathrow and Farnborough Airports
- Slough, Reading, Bracknell, Basingstoke



Enterprise Zones – Thames Gateway

- Hesletine, then Prescott
- Stratford, Grays, Basildon, Southend, Dartford, North Kent
- A12, M2, M25
- Anglia, SE Trains, HS1
- Southend Airport, Thames Estuary Airport proposal
- London Gateway sea port
- Lower Thames Crossing



Great Planning Disasters (1980)

- Part 1: Case studies
 - London's Third Airport
 - London's Motorways
 - The Anglo-French Concorde
 - San Francisco's BART system
 - Sydney's Opera House
 - Near disasters: California's New campuses and Britain's National Library
- Part 2: communities, bureaucracies, politicians



Great Planning Disasters Revisited (2013)

- Lecture at UCL
- ‘Positive’ and ‘negative’ disasters
- Stansted became the third London airport
- London motorways partly built
- British Library succeeded after decision to locate at St Pancras
- New projects
 - Crossrail
 - HS2



Great Planning Disasters Revisited (2013)

- Lessons:
 - Estimation of demand (HS1 one third)
 - Costs (Concorde, Sydney Opera House)
 - Changes of values of major actors (e.g. decisions on urban renewal, predict and provide)
 - Continuing influence of communities (e.g. Little Missenden), bureaucracies (Treasury) and politicians (at elections)



What would Peter Hall say about planning and cities today?

- Cities still suffer from deprivation and crime
- Slums gone, but still not enough affordable homes, and cladding is the most recent challenge
- Planning seen to hold back development, so Green Belt now being challenged
- Climate change now key challenge, to make homes sustainable
- Covid pandemic and working from home
- Enterprise zones successful
- Mixed results on transport (Crossrail, HS2, EW Rail, TransPennine/Northern)

